

PLASTIC FILTER

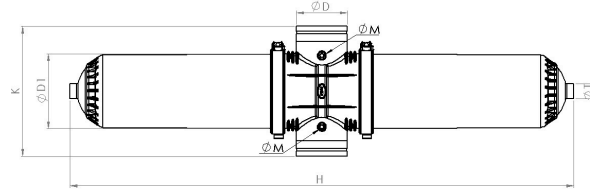


Max. Working Pressure: 8 Bars (116PSI)
Filtration Degree : 20-50-100-125 Micron

PLASTIC FILTERS (HELIX SYSTEM)

| Size | Type | Code | Filtration Type | Flow Rate m3/h | Weight kg | Clamp Type |
|------|--------|------------|-----------------|-------------------|--------------|------------|
| 2" | NORMAL | IR-PD2-C | Disc | 35 | 7 | Chrome |
| 2" | SUPER | IR-PSD2-C | Disc | 40 | 8 | Chrome |
| 2½" | NORMAL | IR-PD25-C | Disc | 40 | 7,1 | Chrome |
| 2½" | SUPER | IR-PSD25-C | Disc | 45 | 8,1 | Chrome |
| 3" | NORMAL | IR-PD3-C | Disc | 45 | 7,2 | Chrome |
| 3" | SUPER | IR-PSD3-C | Disc | 50 | 8,2 | Chrome |
| 2" | NORMAL | IR-PE2-C | Mesh | 35 | 5,4 | Chrome |
| 2" | SUPER | IR-PSE2-C | Mesh | 40 | 6,3 | Chrome |
| 2½" | NORMAL | IR-PE25-C | Mesh | 40 | 5,5 | Chrome |
| 2½" | SUPER | R-PSE25-C | Mesh | 45 | 6,4 | Chrome |
| 3" | NORMAL | IR-PE3-C | Mesh | 50 | 5,6 | Chrome |
| 3" | SUPER | IR-PSE3-C | Mesh | 55 | 6,5 | Chrome |
| 2" | NORMAL | IR-PD2-G | Disc | 35 | 6,8 | Galvanized |
| 2" | SUPER | IR-PSD2-G | Disc | 40 | 7,8 | Galvanized |
| 2½" | NORMAL | IR-PD25-G | Disc | 40 | 6,9 | Galvanized |
| 2½" | SUPER | IR-PSD25-G | Disc | 45 | 7,9 | Galvanized |
| 3" | NORMAL | IR-PD3-G | Disc | 45 | 7,0 | Galvanized |
| 3" | SUPER | IR-PSD3-G | Disc | 50 | 8,0 | Galvanized |
| 2" | NORMAL | IR-PE2-G | Mesh | 35 | 5,2 | Galvanized |
| 2" | SUPER | IR-PSE2-G | Mesh | 40 | 6,1 | Galvanized |
| 2½" | NORMAL | IR-PE25-G | Mesh | 40 | 5,3 | Galvanized |
| 2½" | SUPER | R-PSE25-G | Mesh | 45 | 6,2 | Galvanized |
| 3" | NORMAL | IR-PE3-G | Mesh | 50 | 5,4 | Galvanized |
| 3" | SUPER | IR-PSE3-G | Mesh | 55 | 6,3 | Galvanized |
| 2" | NORMAL | IR-PD2-P | Disc | 35 | 6,7 | Polyamide |
| 2" | SUPER | IR-PSD2-P | Disc | 40 | 7,7 | Polyamide |
| 2½" | NORMAL | IR-PD25-P | Disc | 40 | 6,8 | Polyamide |
| 2½" | SUPER | IR-PSD25-P | Disc | 45 | 7,8 | Polyamide |
| 3" | NORMAL | IR-PD3-P | Disc | 45 | 6,9 | Polyamide |
| 3" | SUPER | IR-PSD3-P | Disc | 50 | 7,9 | Polyamide |
| 2" | NORMAL | IR-PE2-P | Mesh | 35 | 5,1 | Polyamide |
| 2" | SUPER | IR-PSE2-P | Mesh | 40 | 6,0 | Polyamide |
| 2½" | NORMAL | IR-PE25-P | Mesh | 40 | 5,2 | Polyamide |
| 2½" | SUPER | R-PSE25-P | Mesh | 45 | 6,1 | Polyamide |
| 3" | NORMAL | IR-PE3-P | Mesh | 50 | 5,3 | Polyamide |
| 3" | SUPER | IR-PSE3-P | Mesh | 55 | 6,2 | Polyamide |

DOUBLE PLASTIC FILTER



Max. Working Pressure: 8 Bars (116PSI)

Filtration Degree : 20-50-100-125 Micron

PLASTIC DOUBLE FILTERS (HELIX SYSTEM)

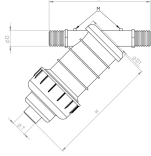
| Size | Type | Code | Filtration Type | Flow Rate m ³ /h | Weight kg | Clamp Type |
|------|--------|-----------|-----------------|--------------------------------|--------------|------------|
| 3" | NORMAL | IR-DD3-C | Disc | 50 | 11,4 | Chrome |
| 3" | SUPER | IR-DDS3-C | Disc | 70 | 11,6 | Chrome |
| 4" | NORMAL | IR-DD4-C | Disc | 60 | 13,6 | Chrome |
| 4" | SUPER | IR-DDS4-C | Disc | 80 | 13,8 | Chrome |
| 3" | NORMAL | IR-DE3-C | Mesh | 50 | 8,4 | Chrome |
| 3" | SUPER | IR-DES3-C | Mesh | 70 | 8,6 | Chrome |
| 4" | NORMAL | IR-DE4-C | Mesh | 60 | 9,8 | Chrome |
| 4" | SUPER | IR-DES4-C | Mesh | 80 | 10,0 | Chrome |
| 3" | NORMAL | IR-DD3-G | Disc | 50 | 11,2 | Galvanized |
| 3" | SUPER | IR-DDS3-G | Disc | 70 | 11,4 | Galvanized |
| 4" | NORMAL | IR-DD4-G | Disc | 60 | 13,5 | Galvanized |
| 4" | SUPER | IR-DDS4-G | Disc | 80 | 13,6 | Galvanized |
| 3" | NORMAL | IR-DE3-G | Mesh | 50 | 8,2 | Galvanized |
| 3" | SUPER | IR-DES3-G | Mesh | 70 | 8,4 | Galvanized |
| 4" | NORMAL | IR-DE4-G | Mesh | 60 | 9,6 | Galvanized |
| 4" | SUPER | IR-DES4-G | Mesh | 80 | 9,8 | Galvanized |
| 3" | NORMAL | IR-DD3-P | Disc | 50 | 10,9 | Polyamide |
| 3" | SUPER | IR-DDS3-P | Disc | 70 | 11,1 | Polyamide |
| 4" | NORMAL | IR-DD4-P | Disc | 60 | 13,2 | Polyamide |
| 4" | SUPER | IR-DDS4-P | Disc | 80 | 13,3 | Polyamide |
| 3" | NORMAL | IR-DE3-P | Mesh | 50 | 7,9 | Polyamide |
| 3" | SUPER | IR-DES3-P | Mesh | 70 | 8,1 | Polyamide |
| 4" | NORMAL | IR-DE4-P | Mesh | 60 | 9,3 | Polyamide |
| 4" | SUPER | IR-DES4-P | Mesh | 80 | 9,5 | Polyamide |

PLASTIC FILTER



PLASTIC HYDOCYCLONE

| Code | Type | Size | Description |
|------------|--------|------|--|
| IR-P2020 | NORMAL | 2" | 2" PLASTIC HYDOCYCLONE |
| IR-P2025 | NORMAL | 2½" | 2½" PLASTIC HYDOCYCLONE |
| IR-P203006 | NORMAL | 3" | 3" PLASTIC HYDOCYCLONE DRAINAGE TANK 8 LT |
| IR-P203010 | NORMAL | 3" | 3" PLASTIC HYDOCYCLONE DRAINAGE TANK 25 LT |



PLASTIC MINI FILTER

| Code | Type | Size | FiltrationType Type | Flow Rate m3/h | Weight kg |
|-----------|------|------|---------------------|----------------|-----------|
| IR-MPE034 | MINI | ¾" | Mesh | 3 | 0,25 |
| IR-MPE100 | MINI | 1" | Mesh | 5 | 0,40 |
| IR-MPE114 | MINI | 1¼" | Mesh | 8 | 1,00 |
| IR-MPE150 | MINI | 1½" | Mesh | 10 | 1,00 |
| IR-MPE200 | MINI | 2" | Mesh | 12 | 1,20 |
| IR-MPD034 | MINI | ¾" | Disc | 3 | 0,25 |
| IR-MPD100 | MINI | 1" | Disc | 5 | 0,40 |
| IR-MPD114 | MINI | 1¼" | Disc | 8 | 1,00 |
| IR-MPD150 | MINI | 1½" | Disc | 10 | 1,00 |
| IR-MPD200 | MINI | 2" | Disc | 12 | 1,20 |



PLASTIC FILTERS CARTRIDGE

| Code | Description |
|----------|-------------|
| IR-17164 | Super |
| IR-17165 | Normal |

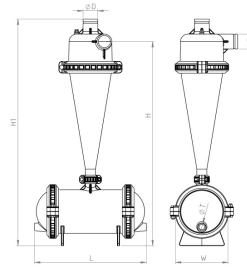
Disc Cartridge



Mesh Cartridge



PLASTIC HYDROCYCLONE FILTER



| Code | D | T | H | H1 | L | W | Flow Rate | | Weight |
|-------|------|-----|------|------|-----|-----|-------------------|----|--------|
| | inch | | mm | | | | m ³ /h | kg | |
| P2020 | 2 | 3/4 | 1023 | 1154 | 580 | 206 | 20-30 | | 9,5 |
| P2025 | 2½ | 3/4 | 1023 | 1154 | 580 | 206 | 30-40 | | 9,5 |
| P2030 | 3 | 2 | 1225 | 1360 | 670 | 322 | 40-60 | | 19 |

| | |
|------------------------------------|----------------|
| BODY MATERIAL | PA %30 GFR |
| MAXIMUM WORKING PRESSURE | 6 BAR (88 PSI) |
| MAXIMUM WORKING TEMPERATURE | 60 ° C (140 F) |

